

“MANAGING A PROJECT FOR PROFIT “

Case Study:

Vertical Installation of Reduced Thickness Porcelain Tile Panels

Global Center for Health Innovation and Convention Center (aka Med Mart)
Cleveland, OH

By: Commercial Tile & Stone, Inc.



1.1 million SF Cleveland GCHI & Convention Center
(14 acres underground = logistic challenges)



View of Atrium
Thin Porcelain Wall Panels
Installed @ Main Level



Cleveland Global Center for Health Innovation and Convention Center
Cleveland, Ohio
Contract No. 1111000
Photo #524 - Global Center for Health Innovation Atrium
Date: February 3, 2013



THIN PANEL INSTALLATION GUIDELINES
(from Manufacturer reps during TCAA Tile Convention in 2013)

- Check substrates before beginning the installation. Same must be virtually **perfect!** Any irregularities will show in your installation.
- The joints in the substrate should be close to the center of the panels, **NOT** in alignment with same.
- Edges are fragile. Put cardboard or carpet piece down to rest edges on in areas where you may need to sit the piece down. *Treat like a large piece of glass.*
- Cutting table must be “dead” level to get even pressure when you score the panels.
- When cutting backscore first, all the way to the edge. Then score back in the other direction.
- Use vibrating sander with buffer pad to “beat in” the panel on the wall after same is in place.
- Need movement joints every 25’ +/- just like you do in any tile installation. The porcelain panels do not deny the law of physics.
- Keep all joints **completely** clean of any thinset mortar as full depth is needed for the grout, as this is such a thin material.



Paul Felleisen will continue with the slide presentation which covers actual installation on the job site. Feel free to ask questions DURING the slide presentation.



Moving Panels From Crate To Prep Table (Using Aluminum Frame w/Suction Cups)



Preparing To Cut Panel



Scoring Panel To Cut Using 10' SIGMA 8E KERA CUT 128 Tile Cutter



Snapping Panel After Scoring With Cutter



Moving Back-Buttered Half-Size Panel



Lifting Back-Buttered Panel For Installation @ 17' AFF



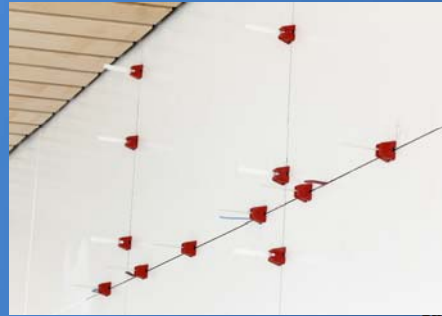
“Beating In” for Full Contact



Adjusting Levelers For Perfect Alignment
After Placing Back-Buttered Panel onto
Wall Troweled With Thinset Mortar



Leveling System Is An Absolute Must
For Installation of Porcelain Panels



Leveling System Remains
In Place For 24 Hours



Completed Thin Porcelain Panel Wall



Note: Productivity Decreases In Areas With A Lot of Cutting Such As Around Doors and at Jambs & Wrapped Corners



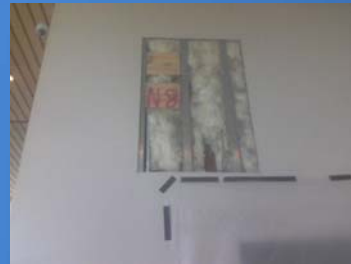
Cutting Around Outlets & Openings Is Very Time Consuming



Completed View @ Coat Check



Removal & replacement of panels after job completion, due to signage removal, was very involved: Required removal & replacement of substrate, along with the panels, use of a scissors lift and extreme care not to damage adjacent panels.



If the replacement panels must be cut, you must include cost of transporting cutting tables, set up and tear down...



Ballroom Pre-Function Area Received
Full Size Panels To 9'10" Height

